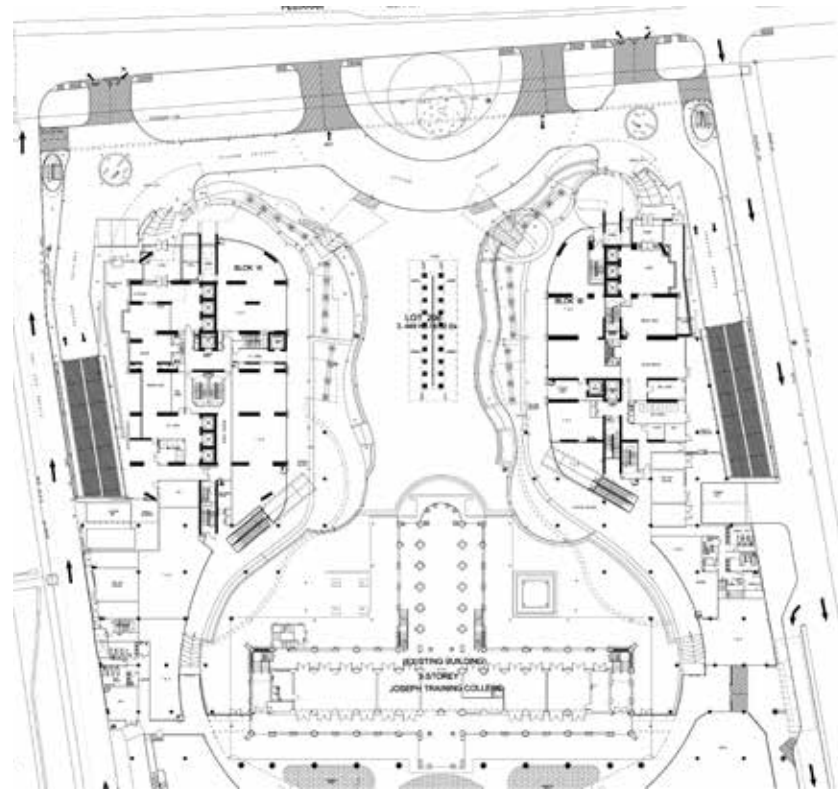




GURNEY PARAGON

The latest addition to Penang's high-rise skyline is its tallest residential condominium, the twin towers of Gurney Paragon





Paragon-Level 1



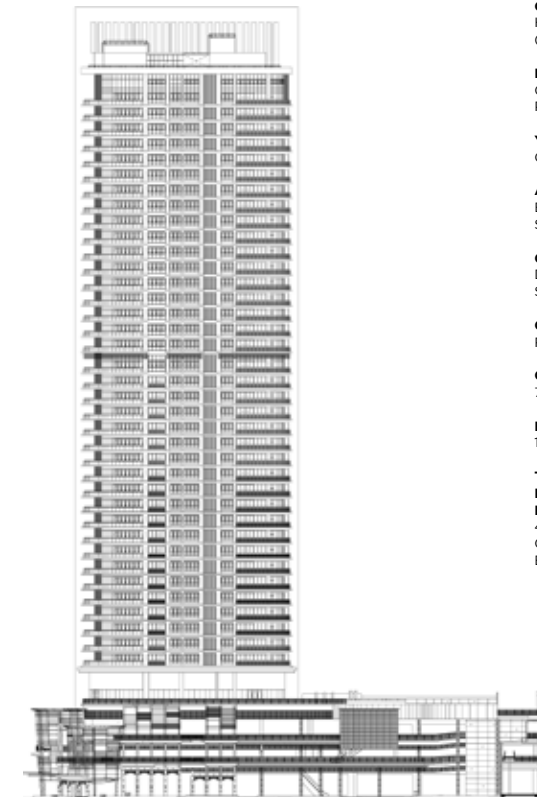
The non-identical twin towers of Gurney Paragon are the latest additions of high rise condominiums to Penang Island and are currently the tallest. This high-end waterfront urban living residential is located in one of the most expensive addresses in Penang, Gurney Drive. The architectural form of the towers flank a public plaza named St. Jo Square, creating a new architectural landmark and “place to be” for the island.

The two towers are part of an integrated master plan that consists of two residential towers fronting Gurney Drive which were completed in October 2011, a corporate tower and an 8-storays mall fronting Kelawei Road together with St. Joseph Novitiate (previously Uplands International School), which has been restored as a focal point of the entire development. Nevertheless, the residential components are well segregated from the retail and office components for exclusivity and privacy.

Each tower is planned with



Left Elevation



Right Elevation

CLIENT HUNZA PROPERTY (PG) SDN BHD	CONTRACTOR CENTRAL FORTE SDN BHD
LOCATION GURNEY DRIVE, PENANG	C&S ENGINEERS ARUP ENGINEERING SDN BHD
YEAR COMPLETED OCTOBER 2011	M&E ENGINEERS PENKONSULT SDN BHD
ARCHITECT BYG ARCHITECTURE SDN BHD	QUANTITY SURVEYOR KUANTIBINA SDN BHD
CONCEPT DP ARCHITECTS SINGAPORE	LANDSCAPE ARCHITECT CONSPEC BUILDERS SDN BHD
COST RM 180 MILLION	PHOTOGRAPHY STEAK PHOTOGRAPHY & LINA TEOH
GROSS FLOOR 79,600 SQ METRE	
BUILT-UP FLOOR 100,700 SQ METRE	
TOTAL NO. OF FLOORS (ABOVE AND BELOW GROUND) 43-STOREYS ABOVE GROUND AND 2 BASEMENT LEVELS	





separate access from the service driveway fronting Gurney Drive via a landscaped mound roundabout drop-off. Each roundabout is planted with a stainless steel character; “e” and “w” for the East and West Tower respectively. From the drop-off porch one will have to access a security glass-box foyer before he is greeted by a triple-volume grand reception lobby. With the exception of the common service lift, all lifts open directly into dedicated lobbies for each unit. All the condominium units are designed with full height glazing and parameter terraces with horizontal mild steel and glass railings to capitalize on the 360 degree views to the sea, Gurney Drive, the hills and the city. The perimeter terraces surrounding the units also double as horizontal sunshades and help reduce glare.

The oval towers are designed as twin structures to create a stronger presence that would otherwise be weaker if built as a lone tower. With a towering height of 43-storeys, this has distinctively set the development apart from the rest of the conventional towers along Gurney Drive. The verticality of the blocks is accentuated by two

parallel contiguous shear walls rising from the ground floor and is completed as a rectangular box crowning for each tower respectively. These are essentially concrete housing for domestic and fire tanks.

At the base of each tower, a 3-storeys podium with curvilinear forms is designed with randomly composed horizontal steel members to bring more interest to the street level particularly admired from St. Jo’s Square. Retail and F&B lots are located at these podium levels facing the plaza whilst facilities for the condominiums view directly to the sea and the neighbouring lots. The condominiums also boast of infinity pools that are located at the roofs of both podiums providing a magnificent view of the plaza and the sea beyond.

The approach to St. Joseph Novitiate via St. Jo’s square which is the centre of attraction of the entire development is celebrated with flamboyance fashioned by the curvilinear forms and landscape features along the plaza, whilst the East and West towers beckon as the grand gateway to Gurney Paragon.

