

VALLEY OF DREAMS

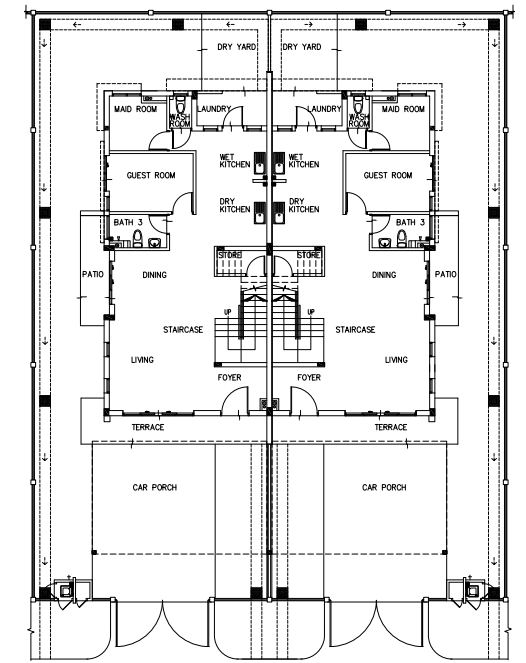
Valley of Dreams is a gated community development in Vietnam that fosters an intimate setting – creating a sense of belonging and privacy for each individual unit.



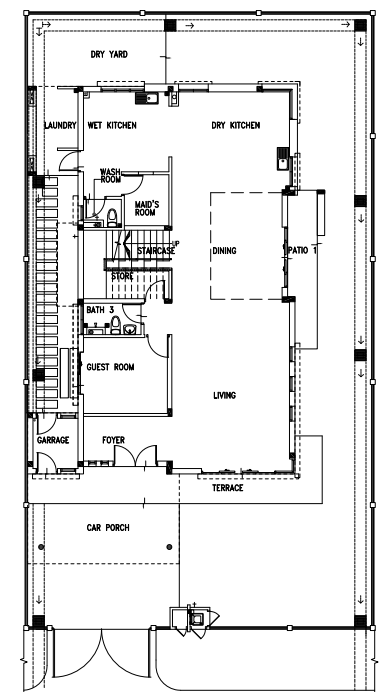
The different types of residential buildings within the township are reflected by the use of different colours



2-storey semi-detached house



0m 2.5m 5m
2-Storey Semi-D Level 1 Floor Plan



0m 2.5m 5m
2-Storey Small Villa Level 1 Floor Plan

Valley of Dreams is spread across 31,200 square metres, and is the second phase of SP Setia's maiden project in Vietnam called Setia EcoLakes – a green-inspired township in the suburbs of Ho Chi Minh City, which is developed under a joint venture company called Setia Becamex Joint Stock Company. The development is truly an oasis within the suburban setting of My Phuoc, Binh Duong Province which is 40km north of Ho Chi Minh City, Vietnam. The components of development in Valley of Dreams comprise of 32 units of 2-Storey Semi-Detached Houses, 8 units of 3-Storey Semi-Detached Houses,

12 units of 2-Storey Small Villas, and 6 units of 3-Storey Small Villas. The overall master plan of Setia EcoLakes (2.26 mil square metres) is a well-planned community township with large green networks that link pocket parks and town parks, artificial lakes and water streams, recreational facilities, a commercial centre, health care facilities and an international school. EcoLakes introduces a complete lifestyle that is not precedent in Vietnam, offering not only functional and contemporary homes, but also generating a well-knit community with ample and diverse public realms where friends and neighbours can interact.

The idea behind 'Valley of Dreams' is an extension from the vision of EcoLakes in delivering a sustainable and healthy living environment that bridges urban development and ecological preservation. All 58 residential units in the Valley of Dreams are clustered within an intimate setting that exude its own charm and identity, creating a naturally gated neighbourhood that infuses a sense of belonging yet warranting maximum privacy to the individual units. The layout of the residential units are well planned with spaces that are suited to the local living context. Due respect are given to religious needs and local



3-storey small villa

fengshui factors. The streetscapes are carefully integrated with a series of hard and softscaping with welcoming and friendly pedestrian links to open spaces where healthy recreational and physical activities can take place. The entire project is surrounded by a generous expanse of natural landscape, offering residents a true living-next-door-to-nature experience.

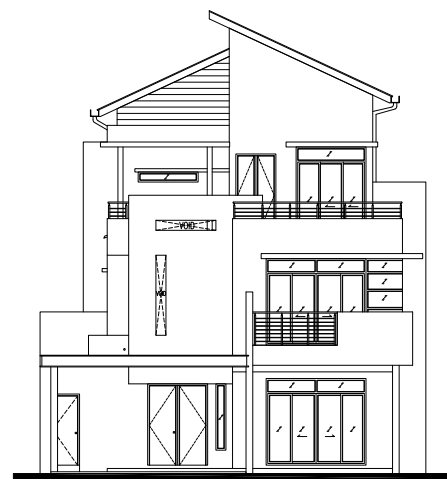
Finding the right architectural language was a challenge for this project. The paradigm shift evident in Vietnam had prompted the emergence of a modern market that caters to a young and dynamic demography which makes up the majority of the population. Feature walls, vertical and horizontal fin walls, single fall pitch roof and clean lines are widely used to emanate an overall sense of simplicity and orderliness in the outlook of the buildings. The different building types are reflected by the colours and textures of the feature walls which complements the multi-coloured and multi-faceted streetscapes within the township. Echoing the Setia tagline of 'work, live, learn and play,' these designs promote not only traditional living in an urban context but community living within a sustainable environment. /am



View of 2-storey semi-detached house & 2-storey small villa



0m 2.5m 5m
3-Storey Semi-D Front Elevation



0m 2.5m 5m
3-Storey Small Villa Front Elevation



View of 2 & 3 storey semi-detached house from Ho Sinh Thai 4 Road



0m 2.5m 5m
2-Storey Semi-D Front Elevation



0m 2.5m 5m
2-Storey Small Villa Front Elevation

CLIENT
SETIABECAMEX JOINT STOCK COMPANY

LOCATION
MY PHUOC, BINH DUONG PROVINCE, VIETNAM

YEAR COMPLETED
2011

ARCHITECT
BYG ARCHITECTURE

PROJECT PRINCIPAL
AR BEN YEOH GUAN BENG, AR MICHAEL ONG CHIN KEONG, AR TEO CHU KHWAI

PROJECT TEAM
AR BEN YEOH GUAN BENG, AR MICHAEL ONG CHIN KEONG, ANG TOK MENG, P S KHAW

DESIGN ARCHITECTS
AR MICHAEL ONG CHIN KEONG, ANG TOK MENG

SITE AREA
31,200 SQUARE METRES

BUILT-UP AREA
19,360 SQUARE METRES

CIVIL ENGINEER
CIDECO CONSTRUCTION DESIGN & CONSULTANT CORPORATION

M&E ENGINEER
AG CONSULT

CONTRACTOR
ROSE INVESTMENT

PHOTOGRAPHER
ANG TOK MENG