

# SUMMER PLACE

A new highrise residential development in Penang presents a new take on clean and egalitarian modern architecture that echoes waterfront living.

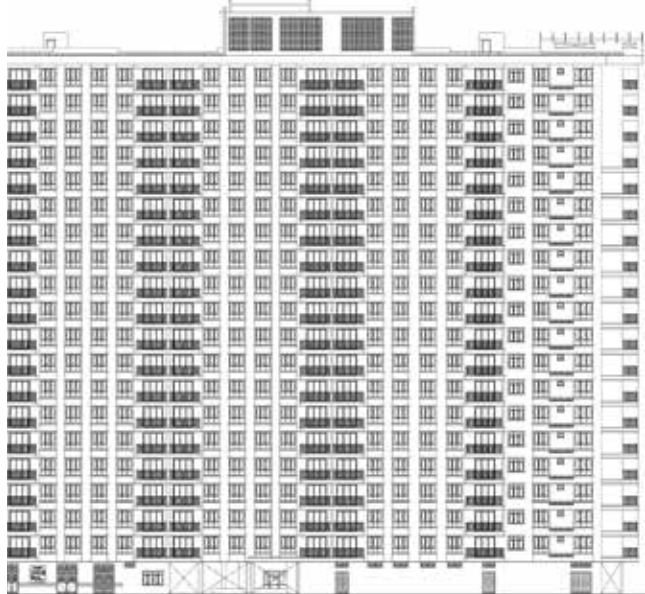




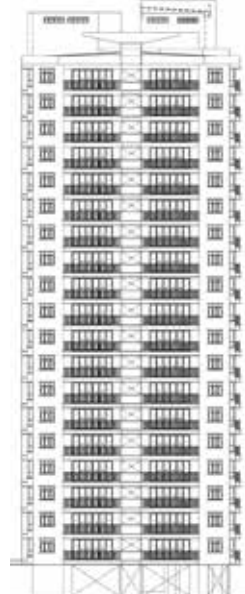


The residential blocks organised in an inverted horseshoe

The Summer Place development consists of 550 units within a 16,187 square metre land adjacent to a waterfront promenade. The master planning is simple and straightforward with three main components; the three, 20-22 storey residential blocks organised in an inverted horseshoe, a 4-storey standalone multi-storey car park block parallel against the top of the horseshoe, and a central park in the enclosure shaped by the blocks. A continuous driveway is offset at the external parameter of the residential blocks providing accessibility to the respective entrance lobbies of each individual block whilst complying with fire safety regulations. The enclosure formed by the residential blocks around the park renders it totally private and hidden away from view. The shape and size of the complex was a potential problem in providing each unit with a view of the seafront. The solution to



Front Elevation (Block 1)



Side Elevation (Block 1)







**CLIENT**  
JELUTONG  
DEVELOPMENT

**LOCATION**  
LEBUH SUNGAI  
PINANG, PENANG

**YEAR COMPLETED**  
JUNE 2010

**ARCHITECT**  
BYG ARCHITECTURE

**PROJECT PRINCIPAL**  
AR TEO CHU KHAI

**PROJECT TEAM**  
AR MICHAEL ONG  
KM NG  
BS TIO

**SITE AREA**  
25,296 SQUARE  
METRES

**BUILT-UP AREA**  
110,345 SQUARE  
METRES

**CIVIL ENGINEER**  
M.E.I. PROJECT  
ENGINEERS

**M&E ENGINEER**  
M.E.I. PROJECT  
ENGINEERS

**QUANTITY SURVEYOR**  
UNITECH QS  
CONSULTANCY

**LIGHTING**  
LIGHTING ELECTRICAL

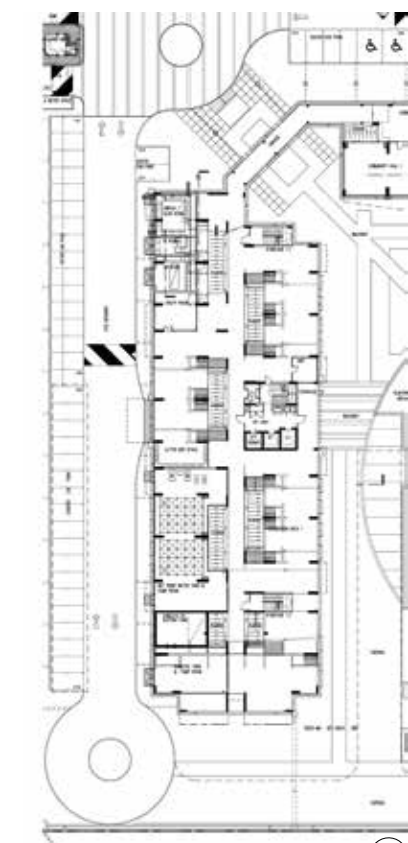
**LANDSCAPING**  
LANDART DESIGN

**CONTRACTOR**  
JURUTAMA

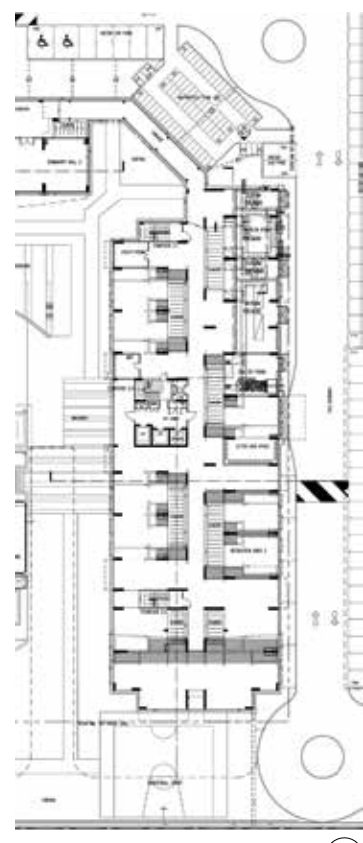
**PHOTOGRAPHER**  
LUCAS & JOYCE  
PHOTOWORKS



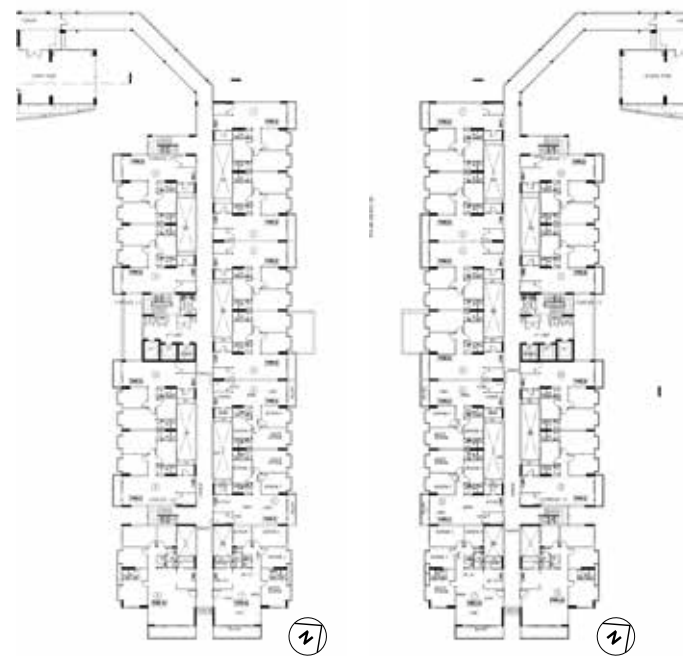
The playground, which is surrounded by the 3 residential blocks



Block 1 - Level 1



Block 2 - Level 1



Block 2 - Level 2

Block 1 - Level 2

A water feature within the park area



this then, is to fold and unfold the otherwise linear block within the given square to best grant a sea view to all units, albeit indirect for some. The 3 separate linear blocks of apartments are also deliberately segregated to break the scale of horizontality. The building features clean and egalitarian modern

architecture that echoes waterfront living and capitalises the panoramic sea view. The park within is a large modern day oasis that is made up of landscape, organic shaped swimming pools, a playground and half a basketball court. The two parallel double-loaded corridor

blocks are composed perpendicularly against the sea and are set as far apart as possible to counter the high intensity of the development with a generously large central landscaped area. The centre block, which directly faces the sea, enjoys both the central park with the backdrop of the sea view beyond. /am